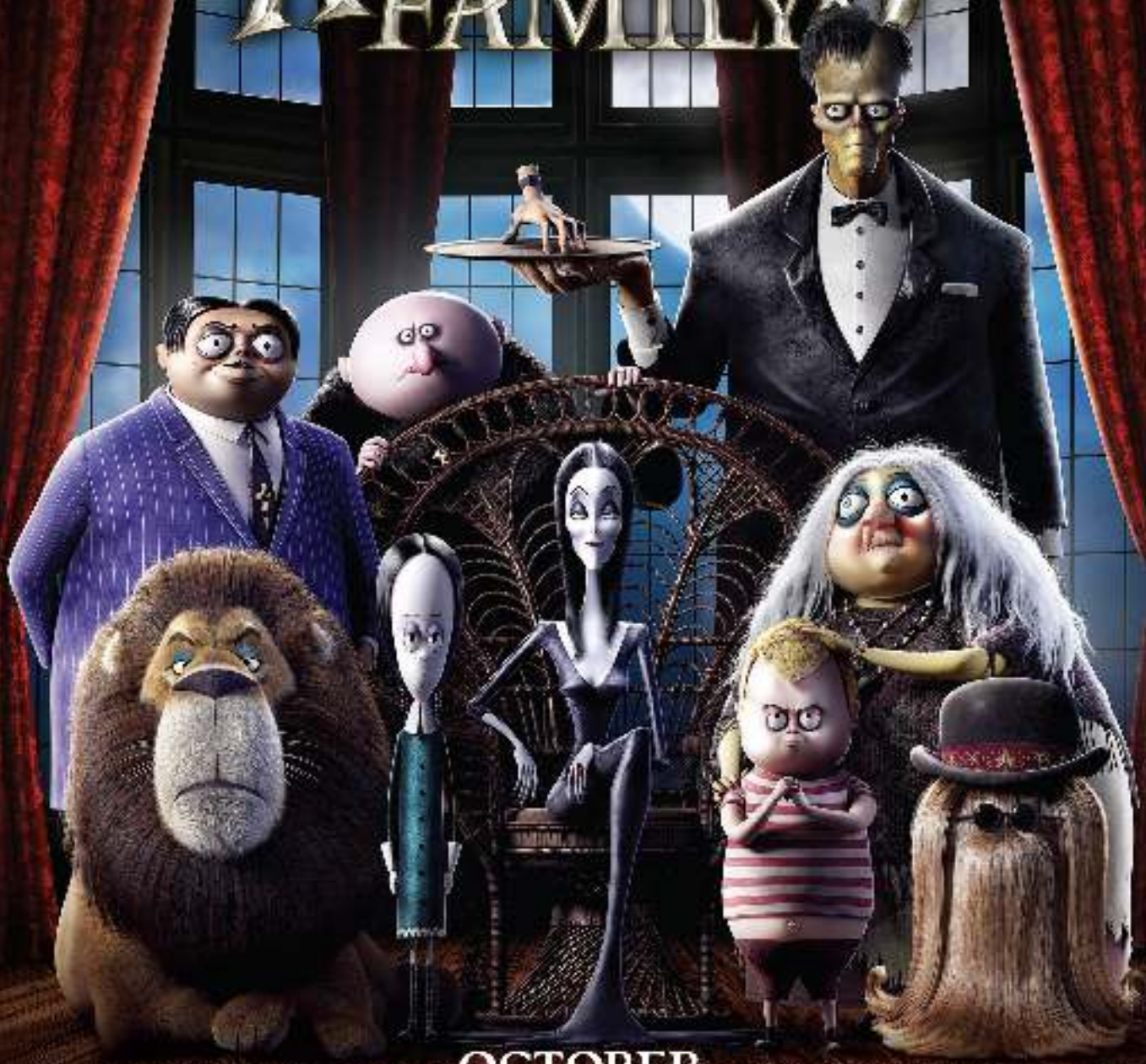


HOW WELL DO YOU KNOW

THE ADDAMS FAMILY



OCTOBER

IN REAL 3D AND DOLBY CINEMA

U. A Visualizing Arts Motion Picture A Metro-Goldwyn-Mayer Production

© 2011 Twentieth Century Fox Film Corporation. All rights reserved. TM & © 2011 Twentieth Century Fox Film Corporation. Fox and the Fox logo are service marks of Twentieth Century Fox Film Corporation. All other marks are the property of their respective owners. For additional use only. NOT FOR SALE.

GOMEZ

Gomez is debonair, charismatic and mischievous. He is dedicated to his children, madly in love with his wife Morticia – and also just plain mad. His favorite ways to relax are a tightened clamp set on his temple and a vigorous round of ninja-level swordplay.

WORD SEARCH

Find the Hidden Words

GOMEZ

TALKATIVE

MORTICIA

INDULGENT

WEDNESDAY

ENTHUSIASTIC

PUGSLEY

MISCHIEVOUS

LURCH

DEBONAIR

DEVOTED

UNCLE

FESTER

GO
EURL
FZNUFQ
XAGCZLNY
DIFKLJQZDA
ECPJBEYSNUNO
MISCHIEVOUSRAE
VTIOSHQWEDNESDAY
MRHBAQVSENOUVDLFHG
WOREZQSPKWTTIUELCAOP
MDGOMEZULMHAVLBITEXL
OEKAAPGVIULFUOJPPR
UVRSDSTNSKYRNMMX
FOHSLADIARCADF
ETRELUATOHIV
SEYGLSIDYR
TDXGTVFI
ESEIEL
RNCG
TA

WORD SEARCH SOLUTION



MORTICIA

Gomez's dream ghoul, Morticia, is devoted to her family and runs the Addams household. While always calm, she does not suffer fools gladly, if at all, and she's been rocking a Goth-look since way before it was cool.



MAZE

START



© 2015

MAZE SOLUTION

WEDNESDAY

Morticia and Gomez's little storm cloud, this teen queen of shock has special skills including lurking, nightcrawling and tormenting her beloved younger brother. Wednesday is about to face her most horrific challenge yet: middle school.

DECIPHER THESE MESSAGES

To decode each letter, move one letter back in the alphabet.

1. J'N DBHF TDIPPMFE.

2. UIJT EBZ JT CFDPNJOH
XPOEFGVMMZ EJTSVQUJWE.

3. ZPV'SF XFBLFOJOH UIF HFOF QPPM.

4. FWFSZPOF JT B GSFBL JG ZPV MPPL
DMPTFMZ FOPVHI.



ANSWERS:
1. I'm cage schooled.
2. This day is becoming wonderfully disruptive.
3. You're weakening the gene pool.
4. Everyone is a freak if you look closely enough.

PUGSLEY

A relentless innovator of devilish schemes and a menacing ten year old on over-drive. Pugsley enjoys stealing warning signs from road hazards and setting unsuccessful booby traps for his sister and bemused father.

SPIDER INSIDER

Pugsley's spider collection has fallen apart; which box contains all of the pieces to complete the spider?



1



2



3



LURCH

The family's faithful butler with the body of a monster and the soul of a poet. He likes to tickle the ivories on an ancient organ and is known and loved for his cheery and frightful greeting – Yooouuu raaaannng? – to visitors at the Addams' door.



CAN YOU FIND
AN EXACT MATCH?

Circle the image
below that matches THIS Lurch. 



THE SECOND LURCH FROM THE RIGHT IS A MARCH.

UNCLE FESTER

Gomez's chrome-domed brother, and the Addams kids' crazy uncle, Fester lights up every room he enters - literally, because he's charged with electricity and can turn on a bulb simply by putting it in his mouth.



PATTERNS Can you finish the pattern?

- A
- B
- C
- D

IT



THING



UNSCRAMBLE THE MISSING WORDS

and decide if the statements about IT and THING are true T or false F.

1 IT has a high pitched **beblab**. T F

2 IT also has a **owdnflver** singing voice. T F

3 IT likes to collect **fdfntreie** hats. T F

4 The Addams Family **nnsardeudst** every word IT says. T F

1 Although he doesn't **kesap**, THING is surprisingly communicative. T F

2 THING likes to practice **dignan** in his spare time. T F

3 THING is a **oveldbe** valet and personal assistant to the Addams Family. T F

4 THING has a **filecoconl** of favorite rings. T F

ANSWERS: 1. bubble TRUE 2. woodshed FALSE 3. different FALSE 4. underneath TRUE 1. speech TRUE 2. dancing FALSE 3. hatstand TRUE 4. nothing FALSE

THING

IT